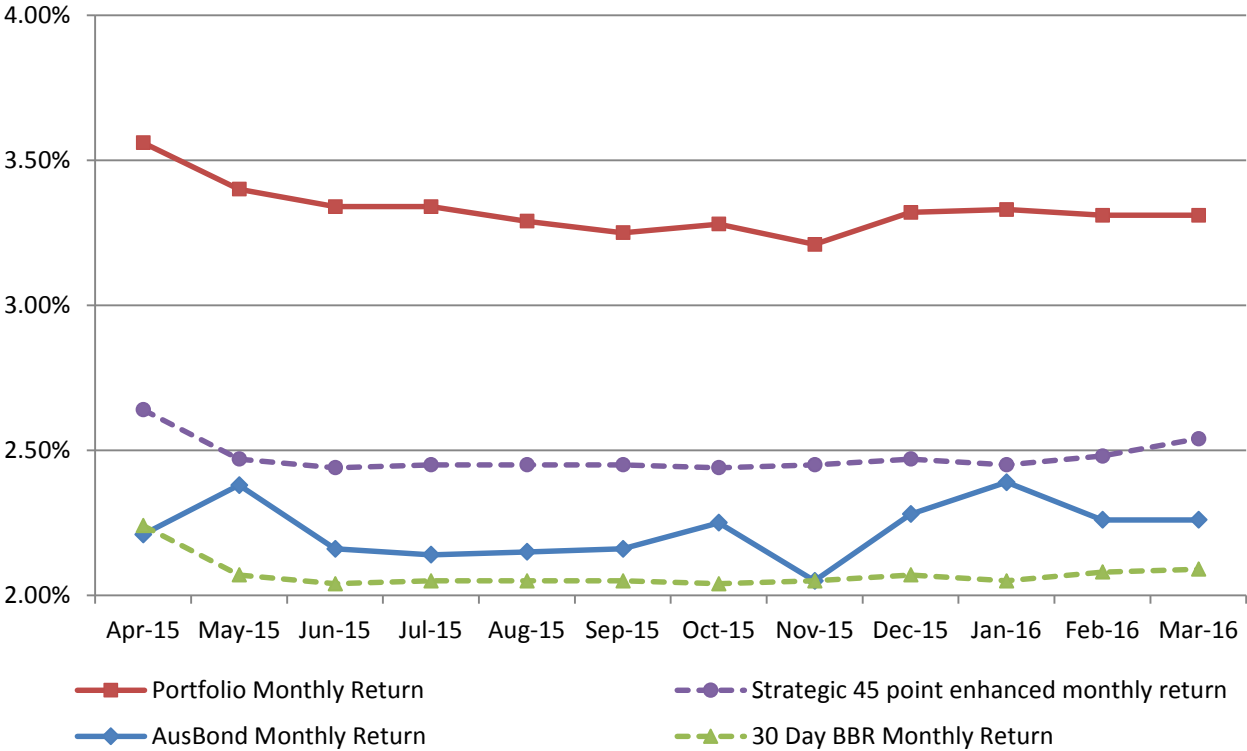


ATTACHMENT B

**INVESTMENT PERFORMANCE
AS AT 31 MARCH 2016**

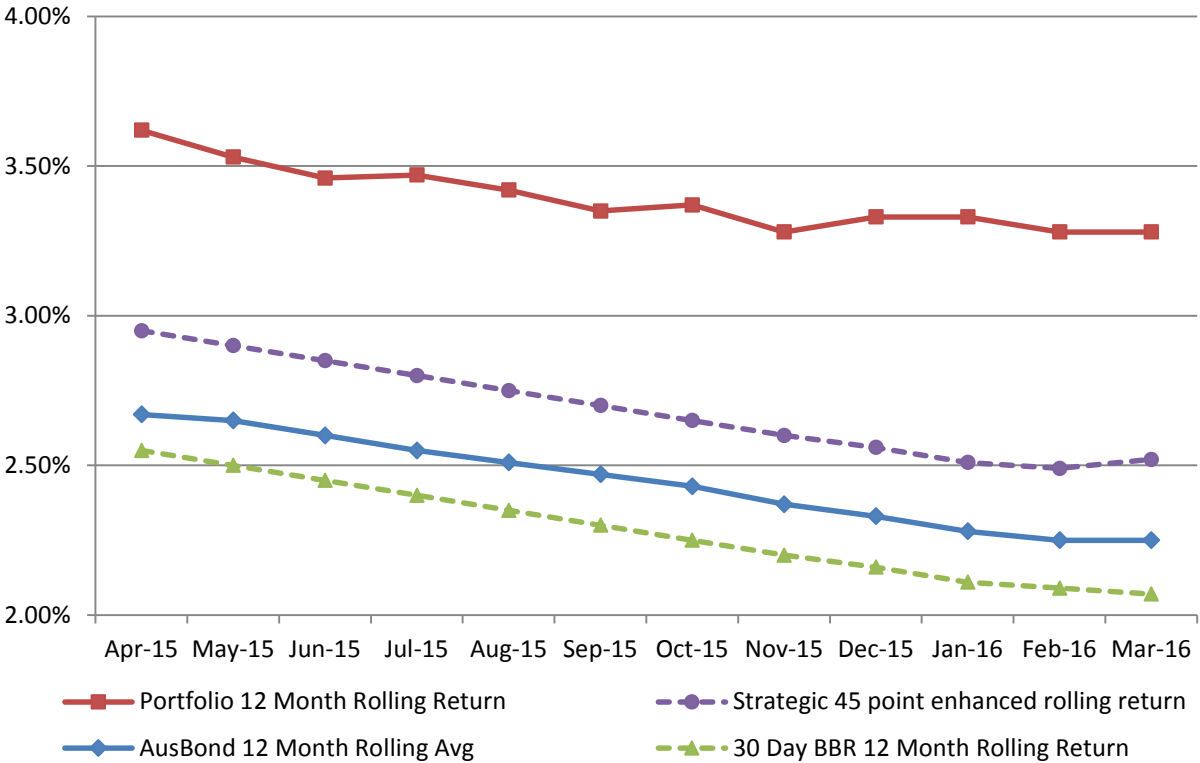
Monthly Results

Actual Portfolio vs Strategic Enhanced Benchmark vs AusBond Benchmark vs 30 Day BBR Benchmark
March 2016

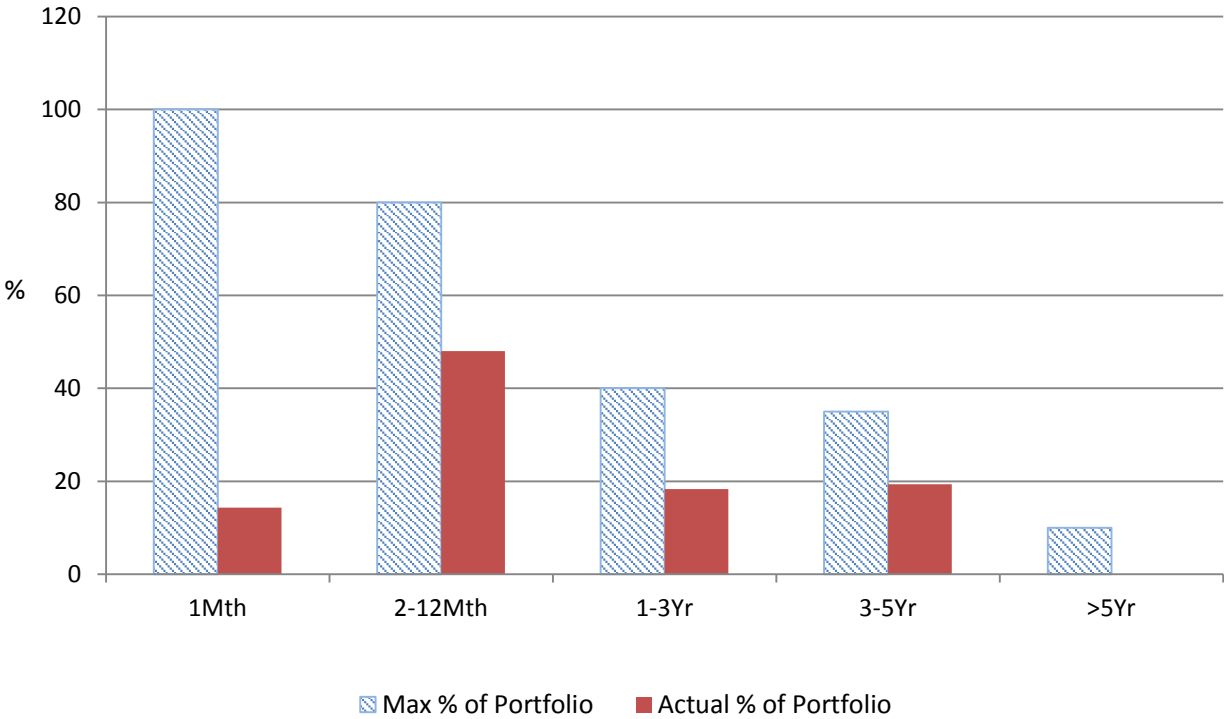


12 Month Rolling Averages

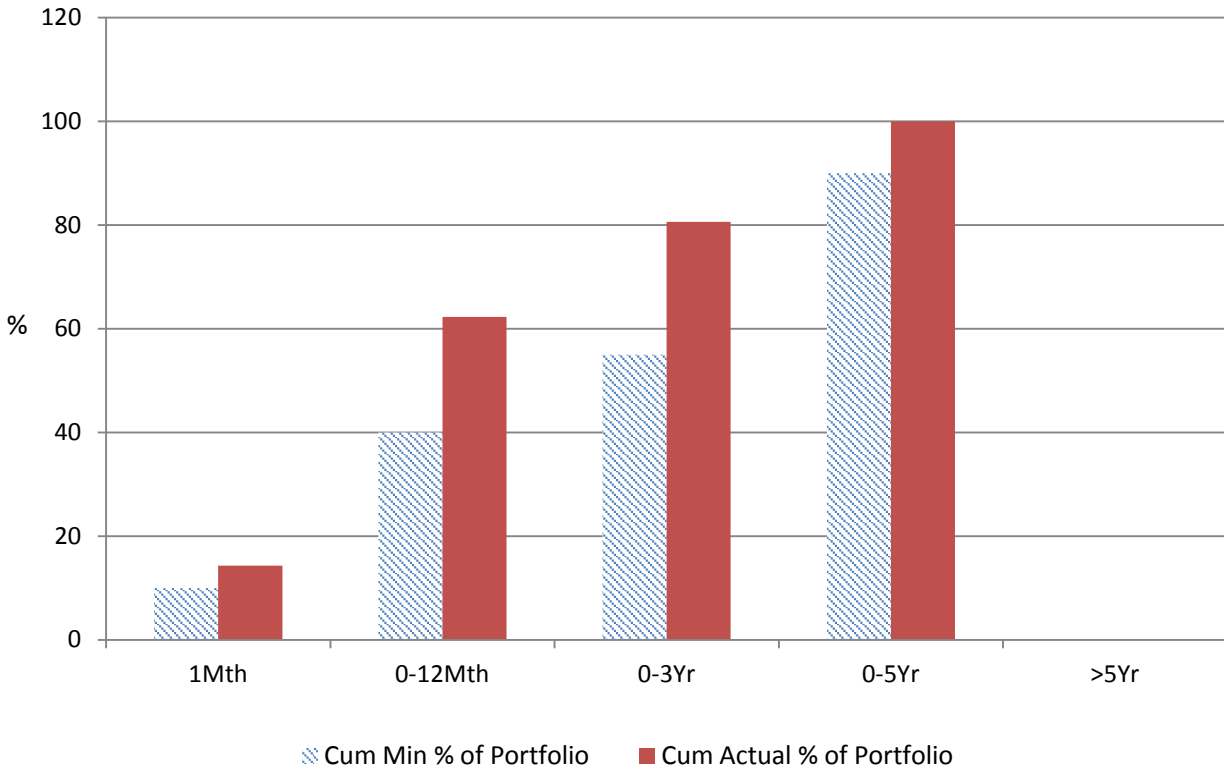
Actual Portfolio vs Strategic Enhanced Benchmark vs AusBond Benchmark vs 30 Day BBR Benchmark
March 2016



% Liquidity - Maximum Allowances

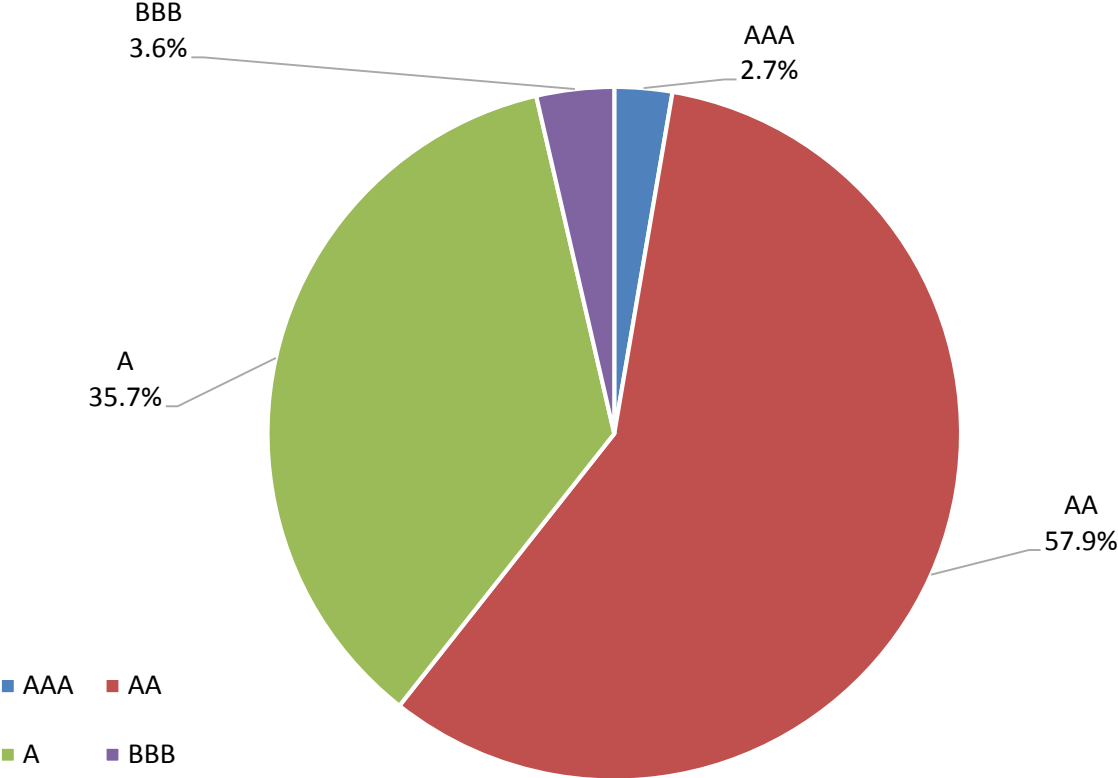


% Liquidity - Minimum Allocations

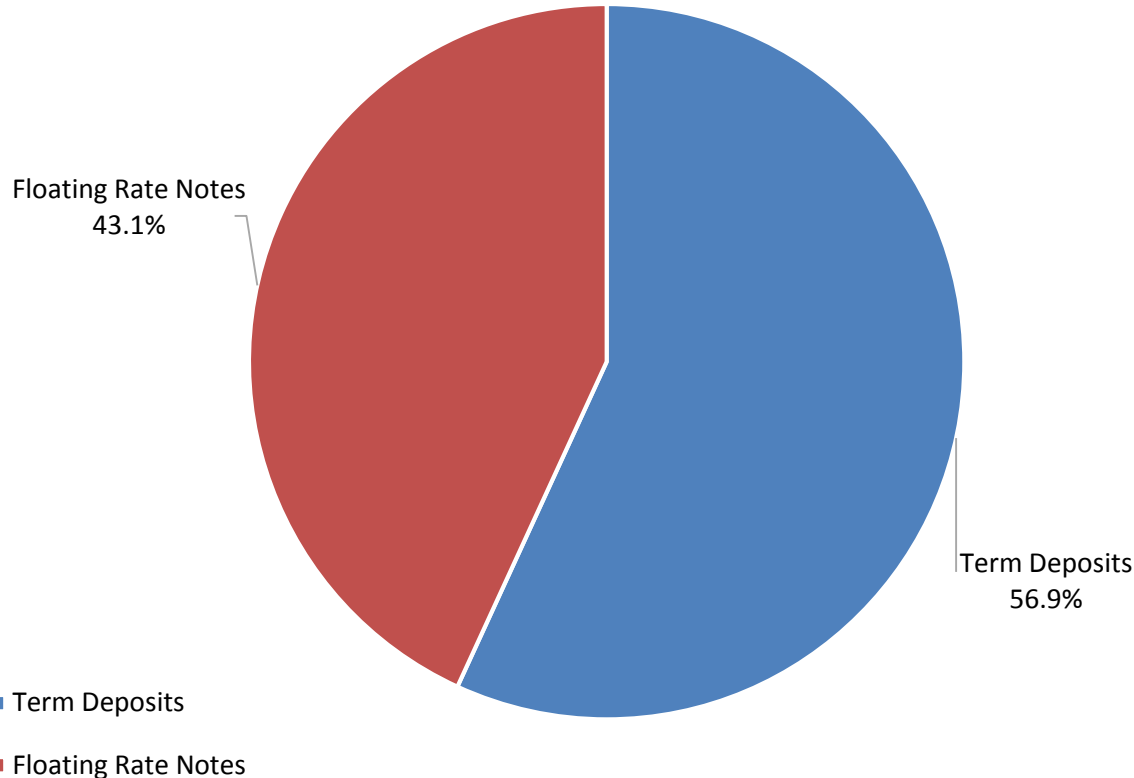


ATTACHMENT B

Risk Profile as at 31 March 2016



Investment Product Profile as at 31 March 2016

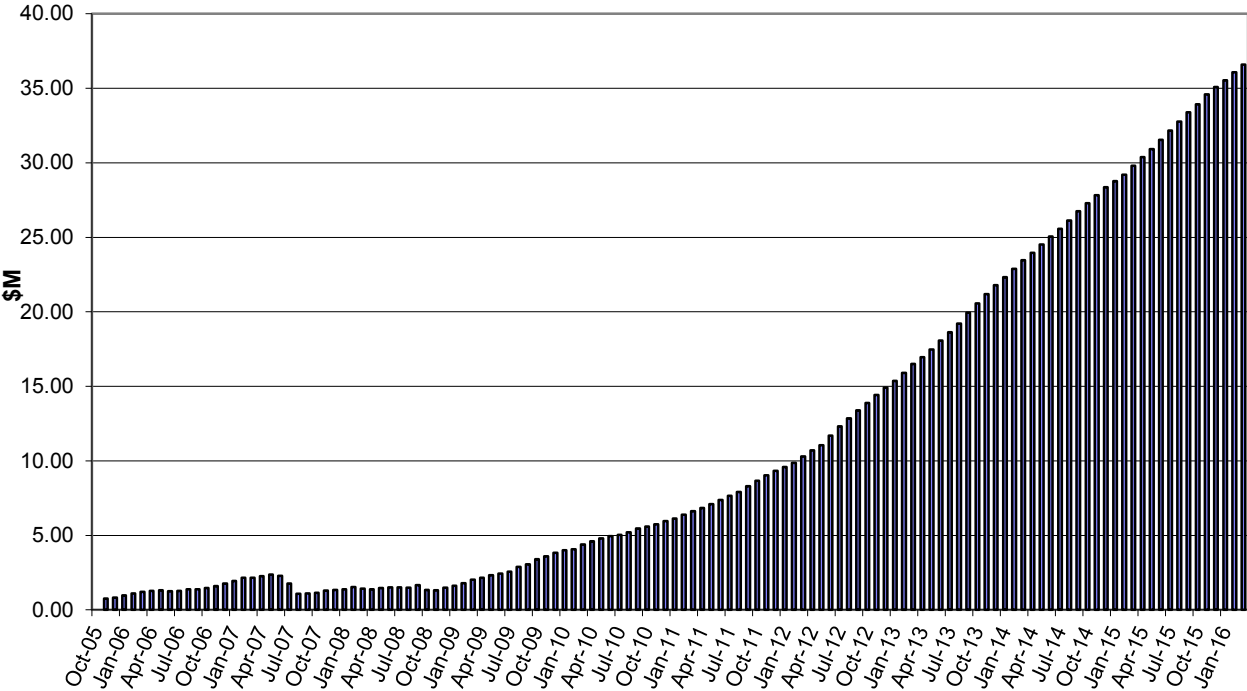


ATTACHMENT B

INVESTMENT AND CASH DISTRIBUTION BY FINANCIAL INSTITUTION AS AT 31 MARCH 2016

Institution Category	Financial Institution	Amount \$M	Financial Inst. %	Institution Cat. %
Australian Big 4 Bank (and related institutions)	ANZ Bank	36.3	6.1	
	Commonwealth Bank-related:	129.0	21.5	
	<i>Bankwest</i>	25.0	4.2	
	<i>Commonwealth Bank</i>	104.0	17.3	
	National Australia Bank	79.0	13.2	
	Westpac Banking Corporation-related:	106.8	17.8	
	<i>St George Bank</i>	0.0	0.0	
	<i>Westpac Banking Corporation</i>	106.8	17.8	
Big 4 Total		351.1		58.6
Other Australian ADIs and Australian subsidiaries of foreign institutions	AMP Bank Ltd	10.0	1.7	
	Bendigo and Adelaide Bank	36.0	6.0	
	Bank Of Queensland	48.0	8.0	
	Members Equity Bank	17.0	2.8	
	IMB	7.0	1.2	
	Heritage Bank	4.0	0.7	
	Newcastle Permanent Building Society	27.0	4.5	
	CUA Limited	25.0	4.2	
	ING Bank	5.0	0.8	
	Greater Building Society	5.0	0.8	
	Bank of Communication	5.0	0.8	
	Rabobank	5.0	0.8	
	Suncorp Bank	40.0	6.7	
	Bank of China-Sydney Branch	5.0	0.8	
Royal Bank of Canada - Sydney	9.5	1.6		
Other ADI Total		248.5		41.4
Grand Total		599.6	100.0	100.0

Cumulative Outperformance over AusBond Benchmark - 2005-2016



Cumulative Outperformance over 30 Day BBR Benchmark - 2005-2016

